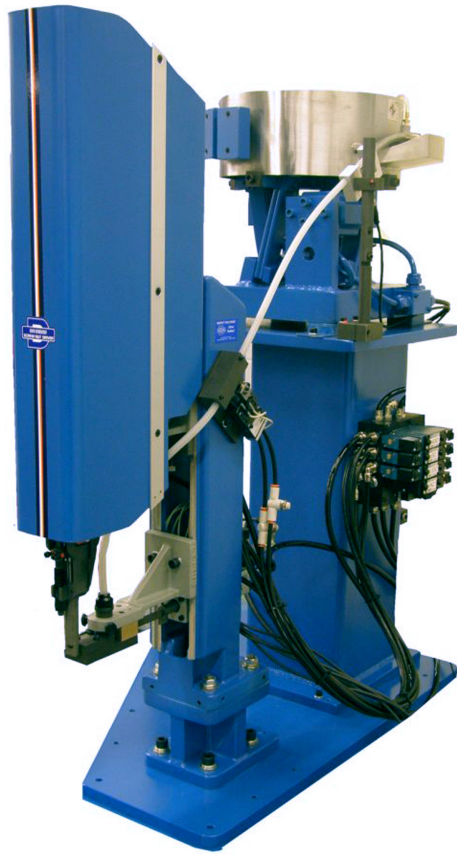




DIXON AUTOMATIC TOOL, INC.

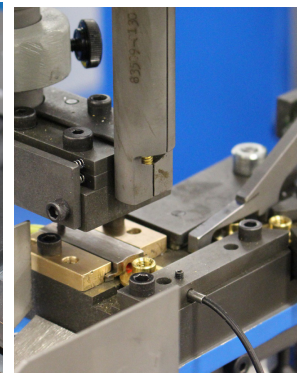
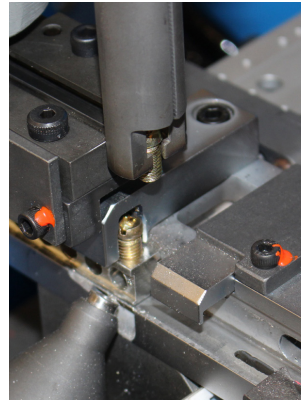
Products for Automated Assembly

Model SD-120 Screwdriver



The Model SD-120 Screwdriver is ideally suited for headless fasteners and threaded studs for a broad range of assembly applications. The Screwdriver provides accuracy and dependability required in an automatic process. The SD-120 Screwdriver is fully automatic and equipped with a vibratory feeder bowl, a gravity feed tube, support column, and a cross shuttle escapement. The escapement transfers and positions each fastener into the placement jaws of the screwdriving head. The placement jaws hold the fastener in position until the fastener is engaged in the workpiece. The Screwdriver can be equipped to drive fasteners to a Torque or Depth setting. The screwdriver head has built-in sensing to confirm proper insertion of each fastener into the workpiece. The baseplate size is determined by the size of the feeder bowl system. The driving head can provide wide range of driving speeds and torque capacities using either pneumatic or DC electric motors.

Feed System Information	
Feed System	Vibratory Feeder Bowl
Bowl Size	228.6 - 914mm (9 - 36 in.)
Track	Tube Gravity or Blow Tube
Shuttle Style Escapement	Mechanically Linked Optional Air Escapement
Piece Part Information	
Shank Diameter	2.2mm - 22mm (.08 in. - .87 in.)
Shank Lengths	Max 50.8mm (2.0 in.)

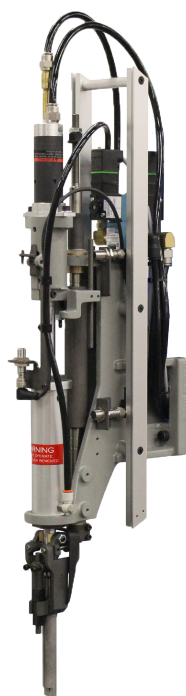


Above: Example screw driving applications for a Model SD-120 Screwdriver.

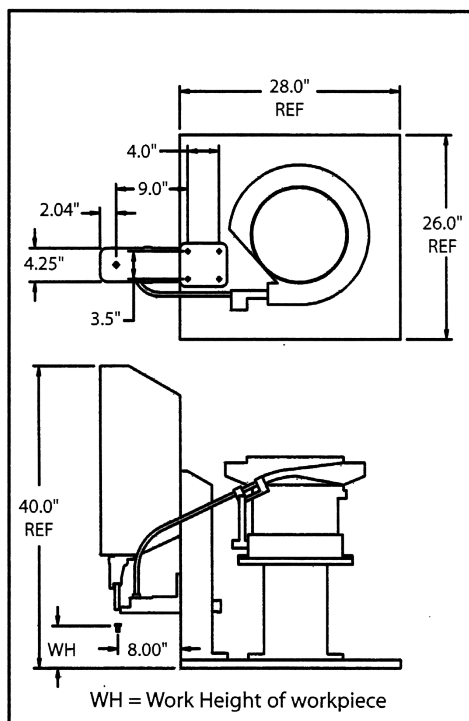


Left: Typical headless fasteners driven by a Model SD-120 Screwdriver

SD-120 Screw Driving Head



SD-120 Dimensional Data



NOTE: We reserve the right to make further technical changes without notice.

CAD drawings are available

Note: Baseplate varies with bowl size:
12-inch ID bowl shown

Standard 100 Series Screw/Nut Driving Head Components

Head Stroke	50.8mm, 76.2mm, 101.6mm, 127mm (2 in., 3 in., 4 in., 5 in.)
Torque	Std: 0.5 - 13.5Nm (4 - 120 in.-lbs.)
Proximity Switches	Std: 24 VDC PNP Others Optional
Valves	Four-way pneumatic valve (24 VDC)
Pneumatic Motor Speeds	250 to 3000 RPM
Air Supply	6.3 Bar (90 PSI)

100 Series Depth Options

Depth Settings	Std: ± 2 turns Optional: $\pm 1/2$ turn
Drive to Depth	Yes

100 Series Torque Options

Clutches	<ul style="list-style-type: none"> 0.45 - 2.8Nm (4 - 20 in.-lbs.) 1.36 - 3.3Nm (12 - 30 in.-lbs.) 2.8 - 5.6Nm (20 - 50 in.-lbs.) <p>Note: 4.5Nm (40 in.-lbs.) and above requires a commercial pneumatic motor with clutch.</p>
Higher Torque Option	13.5 - 20.3Nm (120 - 180 in. lbs.) available with optional head stiffener

Optional Motors

DC Electric	<ul style="list-style-type: none"> Transducer torque control Torque/angle control <p>Note: All brands supported</p>
Servo Motor	Current sensing torque control



DIXON AUTOMATIC TOOL, INC.

2300 23rd Avenue, Rockford, IL 61104 USA
P: 815-226-3000 | sales@dixonautomatic.com
www.dixonautomatic.com