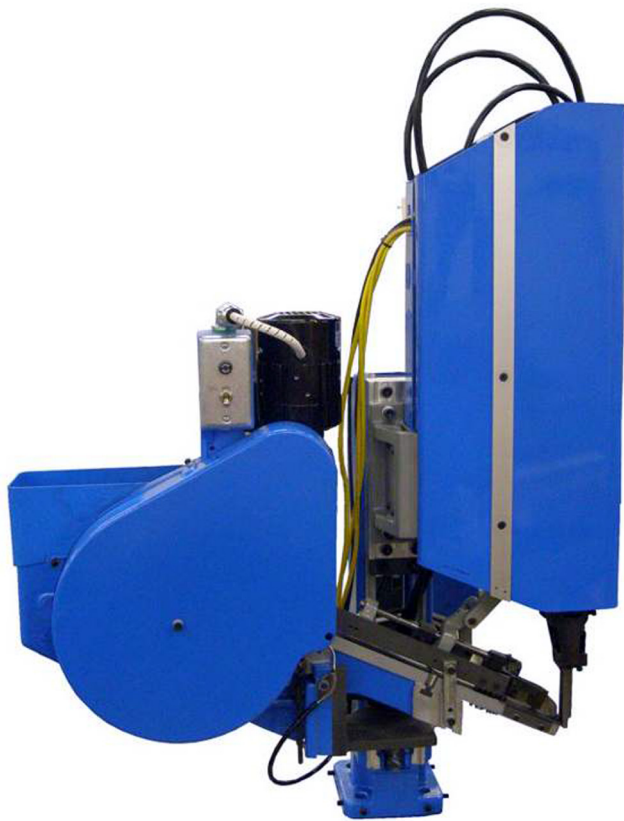




DIXON AUTOMATIC TOOL, INC.

Products for Automated Assembly

Model SD-115 Screwdriver



Feed System Information

Feed System	Rotary Drum Hopper 2458 cubic cm. (150 cubic in.)
Track	Incline Gravity Fed Track
Escapement	Mechanically Linked Optional Air Escapement

Piece Part Information

Shank Diameter	2.8mm - 6.35mm (.110 - .25 in.)
Shank Lengths	Max. 25.4mm (1.0 in.)
Head Diameters	Max. 14mm (.55 in.)

The Model SD-115 Screwdriver is ideally suited for automated screwdriving applications. The driver can be tooled for a broad range of fasteners. The SD-115 Screwdriver is fully automatic and equipped with a rotary hopper, hardened inclined steel track and a transfer escapement. The track is mounted alongside the support column for easy access. The escapement transfers and positions each fastener into the placement jaws of the screwdriving head. The placement jaws hold the fastener's shank in position until the fastener is engaged in the workpiece. The screwdriver head has built-in sensing to confirm proper insertion of each fastener into the workpiece. The driving head can provide wide range of driving speeds and torque capacities using either pneumatic or DC electric motors. Each head can be equipped to drive fasteners to a Torque or Depth setting. The track mounting on the side of the column allows for a deeper work area under the screwdriving spindle.

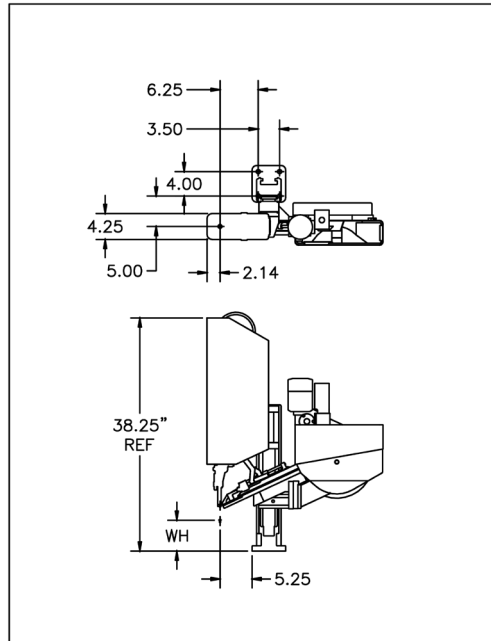


Above: Typical fasteners used in a Model SD-115 Screwdriver.

SD-115 Screw Driving Head



SD-115 Dimensional Data



NOTE: We reserve the right to make further technical changes without notice.
CAD drawings are available.

Note: Baseplate varies with bowl size.
12-inch ID bowl shown.

Standard 100 Series Screw/Nut Driving Head Components

Head Stroke	50.8mm, 76.2mm, 101.6mm, 127mm (2 in., 3 in., 4 in., 5 in.)
Torque	Std: 0.5 - 13.5Nm (4 - 120 in.-lbs.)
Proximity Switches	Std: 24 VDC PNP Others Optional
Valves	Four-way pneumatic valve (24 VDC)
Pneumatic Motor Speeds	250 to 3000 RPM
Air Supply	6.3 Bar (90 PSI)

100 Series Depth Options

Depth Settings	Std: ± 2 turns Optional: $\pm 1/2$ turn
Drive to Depth	Yes

100 Series Torque Options

Clutches	<ul style="list-style-type: none"> 0.45 - 2.8Nm (4 - 20 in.-lbs.) 1.36 - 3.3Nm (12 - 30 in.-lbs.) 2.8 - 5.6Nm (20 - 50 in.-lbs.) Note: 4.5Nm (40 in.-lbs.) and above requires a commercial pneumatic motor with clutch.
Higher Torque Option	13.5 - 20.3Nm (120 - 180 in. lbs.) available with optional head stiffener

Optional Motors

DC Electric	<ul style="list-style-type: none"> Transducer torque control Torque/angle control Note: All brands supported
Servo Motor	Current sensing torque control



DIXON AUTOMATIC TOOL, INC.

2300 23rd Avenue, Rockford, IL 61104 USA
P: 815-226-3000 | sales@dixonautomatic.com
www.dixonautomatic.com