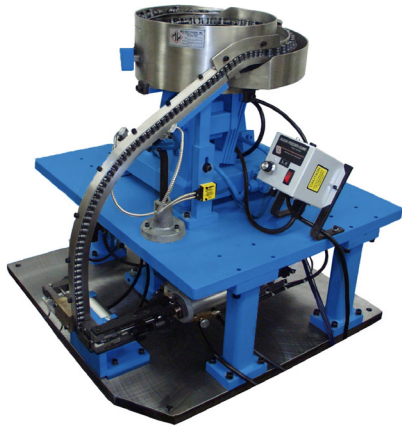




DIXON AUTOMATIC TOOL, INC.

Products for Automated Assembly

Model AP-122 Horizontal Part Placer



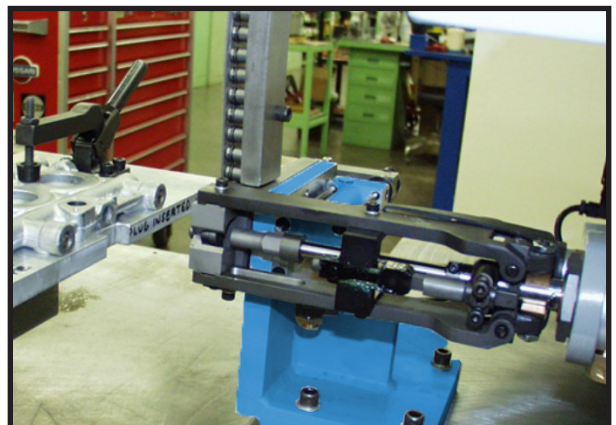
Feed System Information

Feed System	Vibratory Feeder Bowl
Bowl Size	228.6-914mm (9-36 in.)
Track	Inline Gravity Fed Track, Vibratory Inline Fed or Drop Tube
Escapement	Mechanically Linked Standard Optional Air Escapement

Piece Part Information

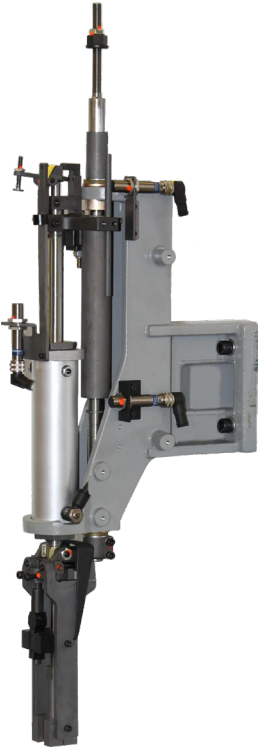
AP-122 Style	Incline Gravity	Vibratory Inline	Drop Tube
Shank Diameter	2.84mm-6.35mm (.122 in. - .250 in.)	Max 25.4mm (1.0 in.)	2.2mm-22mm (0.08 in. - 0.87 in.)
Shank Lengths	Max 25.4mm (1.0 in.)	Max 50.8mm (2.0 in.)	Max 50.8mm (2.0 in.)
Head Diameters	Max 14mm (.56 in.)		Max 50.8mm (2.0 in.)

The Model AP-122 Part Placer is ideally suited for automated assembly systems. It is designed to place pieceparts for horizontal assembly applications. The part placer can also be mounted at a slight angle if required for the application. The part placer is fully automatic and equipped with a vibratory bowl feeder system, interlocking controls, hardened inclined steel track, and transfer escapement. The transfer escapement places each piecepart into the placer head's placement jaws. The placement jaws hold the piecepart in position until the piecepart is engaged in the workpiece. The AP-122 provides a pressing force of 38.6 kilograms (85 pounds). A larger cylinder can be installed to increase the pressing force to 79 kilograms (175 pounds) depending on the placement force requirements. The baseplate size is determined by the size of the bowl feeder system.

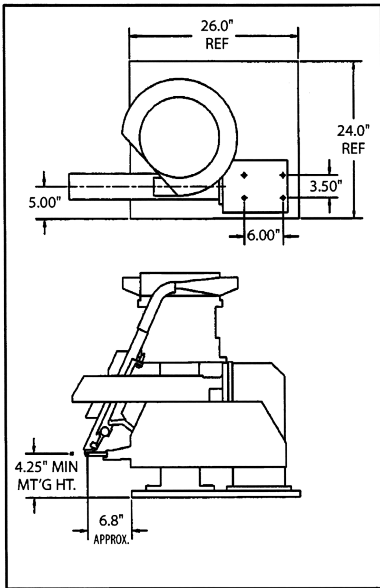


AP-122 Jaws and Tooling

AP-122 Part Placer Head



AP-122 Dimensional Data



NOTE: We reserve the right to make further technical changes without notice.
CAD drawings are available

Note: Baseplate varies with bowl size:
12-inch ID bowl shown

Standard Head Features

Head Stroke	50.8mm, 76.2mm 101.6mm, 127mm (2 in., 3 in., 4 in., 5 in.)
Pressing Force	178-778N (40-175 lbs.) Standard Max 378N(85 lbs. Force) 38.1mm (1.5 in.) Cylinder Optional Max 778N (175 lbs. Force) 50.8mm (2.0 in.) Cylinder
Air Supply	6.3 Bar (90 PSI)
Proximity Switches	Std: 24 VDC PNP Others Optional
Valves	Four-way pneumatic valve (24 VDC)
Inline Load Cells Can Be Added	



DIXON AUTOMATIC TOOL, INC.
2300 23rd Avenue, Rockford, IL 61104 USA
P: 815-226-3000 | sales@dixonautomatic.com
www.dixonautomatic.com