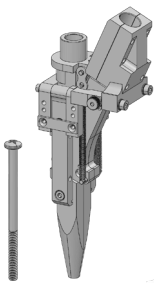


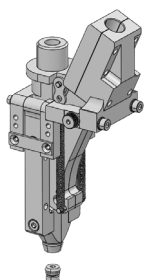


Model LS Blow-Fed Screwdriver

The LS Blow-Fed Screwdriver is ideally suited for automated assembly systems. Each Screwdriver is compact and precision built for outstanding performance. The Screwdriver can be equipped with a pneumatic motor, or a servo drive motor and control. For critical torque requirements, it can also be equipped with electric transducerized torque angle tool with a readout. Motor sizes are limited to a maximum diameter of 63mm (2.5 inches). The LS Drivers have a limitless driving attitude. Fasteners can be driven to a Torque or Depth setting into the work piece. Placement jaws and feed tube attachments are customized to handle the fasteners geometry. Most applications allow the placement jaws to open to allow the fastener's head to pass through freely. If a customer's target part has recessed restrictions, the jaw tooling must be modified accordingly. We prefer to know this when requesting your quotation, as you may need our vacuum model.



LS receiver jaw system with long jaws tooled for fasteners up to a maximum length of 100mm (4 inches)

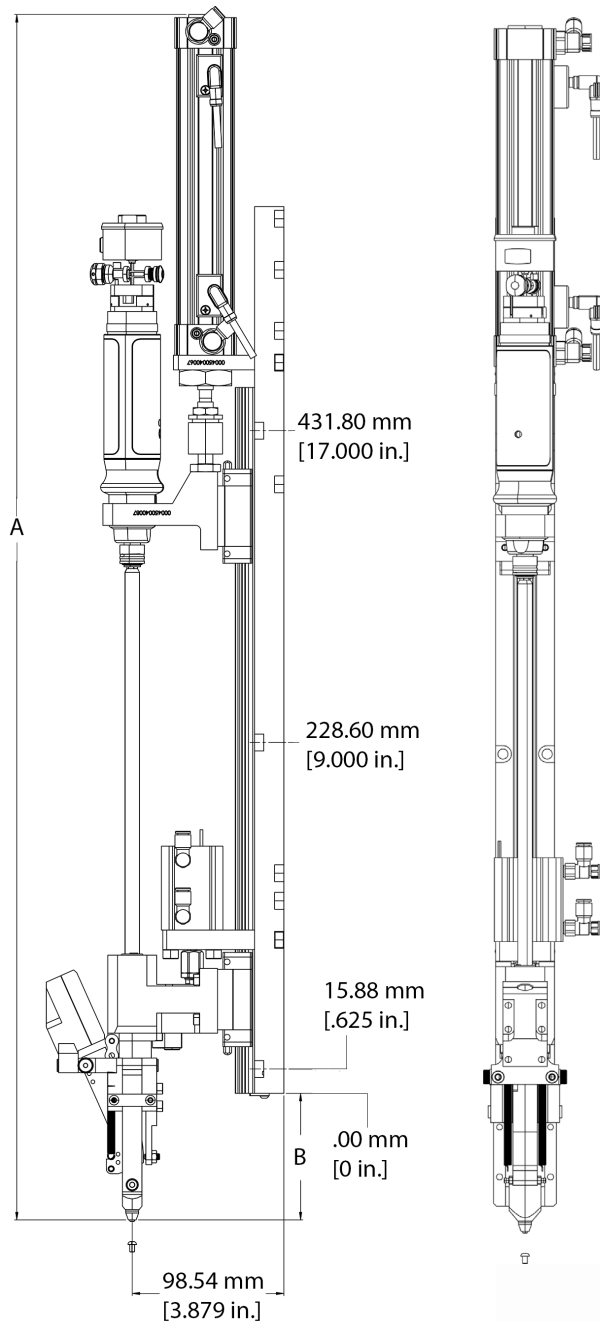


LS receiver jaw system is capable of handling short fasteners in some cases with a 1 to 1 length-to-diameter

Features:

- Easy to integrate
- Excellent performance
- Lightweight, compact construction
- Provides extended life cycles
- Selection of drive motors supported
- Limitless driving attitudes
- Torque and Depth accuracy
- Bit or Socket easily changed
- Slim frame allows closer centerlines
- Long wearing linear rails/bearings
- Many placement jaw designs available
- Adjustable drive thrust
- Stroke limits adjustable
- Low maintenance

Model LS Blow-Fed Screwdriver



Product Specifications

Fastening	Screwdriving
Torque	Up to 10Nm (88.5 in. lbs.)
Max Head Diameter	15mm (.59 in.)
Max Shank Length	100mm (4 in.)
Max Motor Diameter	63mm (2.5 in.)
Motor Types	Air Motor with Clutch
Optional Motors	Servo Motor- Current Controlled DC Motor/ Transducer Controlled DC Motor(All Brands)



	DIMENSION B	DIMENSION A	DIMENSION A	DIMENSION A
		BIT STROKE 150	BIT STROKE 150	BIT STROKE 180
JAW STROKE 25mm	85.3mm (3.36 in.)	662.9mm (26.10 in.)	713.7mm (28.10 in.)	762.9mm (30.00 in.)
JAW STROKE 50mm	64.8mm (2.55 in.)	800.9mm (31.53 in.)	900.7mm (35.46 in.)	961.4mm (37.85 in.)
JAW STROKE 70mm	46.7mm (1.84 in.)	835.7mm (32.90 in.)	931.4mm (36.67 in.)	991.9mm (39.05 in.)



DIXON AUTOMATIC TOOL, INC.
 2300 23rd Avenue, Rockford, IL 61104 USA
 P: 815-226-3000 | sales@dixonautomatic.com
 www.dixonautomatic.com