



Auto-fed Placer/Presses

Model AP-130 Series and Model AP-140 Series

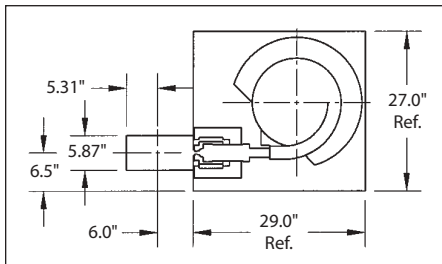
The Model AP-130 Series

Placer/Presses combine the placing and pressing operation into one motion. The Placement Heads have a toggle action and provide up to 2500 pounds of pressing force (11.12kN). The pressing force increases rapidly during the last .50-inch (13mm) of placement stroke. A sensor indicates proper placement of the piecepart. The graph (below-right) shows the pressing force with a 2.5-inch cylinder during the placement stroke. The 130 Series Head is only available with a 3-inch (76.2mm) stroke, and can be cycled up to 80 strokes per minute.

Standard tooling for models with an inclined track, or drop feed tubes can be provided for piecepart sizes up to a .56-inch (14 mm) in diameter, and up to 2-inches (51mm) in length. The Model AP-134 Place/Press with a horizontal vibratory inline feed track can provide pieceparts up to 2.5-inches (64 mm) in diameter, and 4-inches in length.

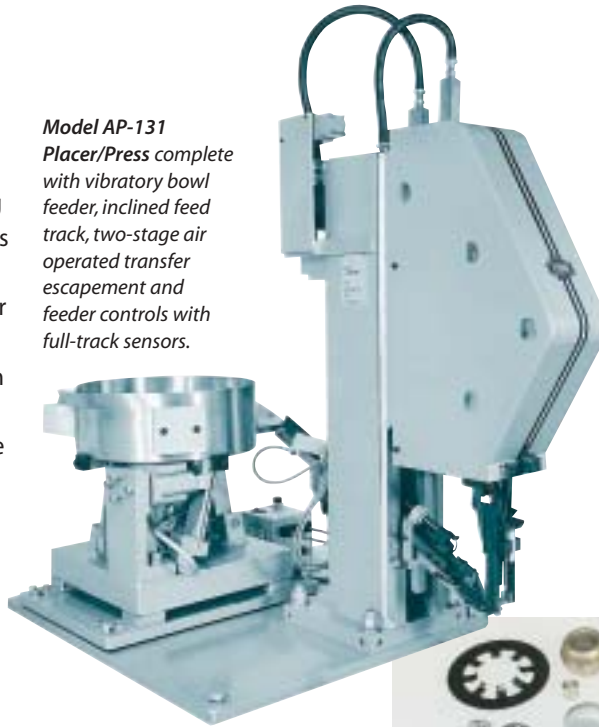
Bowl feeders can be tooled up to 36 inches (915mm) in diameter. Vibratory feed systems will have either cast bowls or stainless steel bowls. As an option, bowls can be coated for delicate parts or for sound reduction purposes. An optional load cell can monitor pressing force. Control options can be selected to meet the requirements of each application.

AP-131 Dimensional Data



NOTE: Baseplate size varies with bowl size. 15-inch bowl shown. We reserve the right to make further technical changes without notice. CAD drawings are available

Model AP-131 Placer/Press complete with vibratory bowl feeder, inclined feed track, two-stage air operated transfer escapement and feeder controls with full-track sensors.



Standard 130 Series Placing Head has a 3-inch stroke and toggle pressing action.



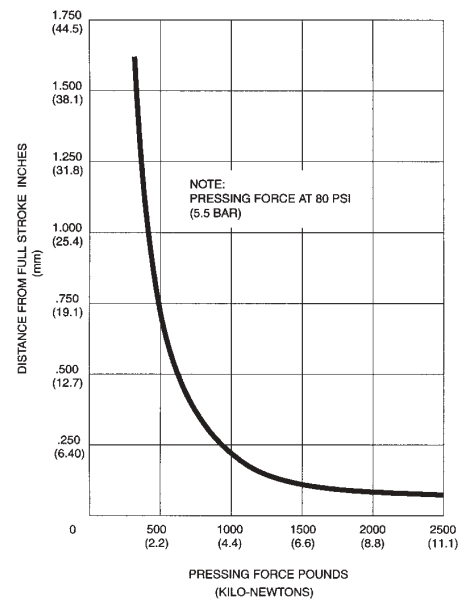
Typical parts for Models AP-130 and AP-140 series



Model AP-133 Placer/Press with vibratory bowl feeder, supply hopper, drop feed tube, shuttle escapement, and feeder controls with part level sensing in drop tube.



Model AP-133 Part Placer/Press tooled to feed, place, and press three (3) vacuum tubes into a throttle body. The body is indexed under the placement head.



Auto-fed Placer/Presses

Model AP-130 Series and Model AP-140 Series

The Model AP-140 Series

Placer/Presses are available with 500 and 900 pound pressing forces (2.2kN and 4kN). The placement force can be adjusted by regulating the air pressure to the placement cylinder. The Placing Head is available with four (4) standard placement strokes from 2-inches (50.8 mm) to 5-inches (127mm). The placing heads can be cycled up to 60 strokes per minute. The 2-stage escapement is actuated by an air cylinder.

Models with inclined tracks, or drop feed tubes can be tooled to provide piecepart sizes up to a .56-inch (14 mm) in diameter, and up to 2-inches (51mm) in length. The Model AP-144 Place/ Press with a horizontal vibratory inline feed track can be tooled to provide pieceparts up to 2.5-inches (64 mm) in diameter, and 4-inches in length.

Bowl feeders can be tooled up to 36-inches (915mm) in diameter. Vibratory feed systems will have either cast bowls or stainless steel bowls. As an option, bowls can be coated for delicate parts or for sound reduction.

An optional load cell can monitor pressing force. Control options can be selected to meet the requirements of each application.

Model AP-141 Part Placer/Press complete with vibratory bowl feeder, inclined feed track, two-stage transfer escapement, feeder controls with full-track sensing, and heavy duty column.



Model AP-141 Part Placer/Press tooled to feed, place, and press serrated pins into brake sub-assemblies.

Model AP-140 Series Placer/Press Head is available with 3-inch (76 mm), and 4.125-inch (105 mm) bore cylinders.



Model AP-143 Placer/Press with vibratory bowl feeder, drop feed tube, shuttle escapement, and feeder controls with part level sensing in drop tube.



Model AP-144 Part Placer/Press tooled to feed, place, and press polished round head decorative rivets with knurled shanks into aluminum wheel rims.

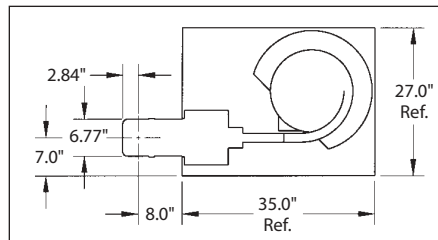


Model AP-144 Part Placer/Press tooled to feed, place, and press an oil seal into case covers.



Typical parts for Models AP-130 and AP-140 series

AP-144 Dimensional Data



NOTE: Baseplate size varies with bowl size. 15-inch bowl shown.

We reserve the right to make further technical changes without notice. CAD drawings are available



DIXON AUTOMATIC TOOL, INC. Products Group

2300 Twenty-Third Ave., Rockford, IL 61104 U.S.A
Phone: 815 / 226-3000 • FAX: 815 / 226-8613

E-mail: sales@dixonautomatic.com • www.dixonautomatic.com